

# CERTIFICATE OF LOCATION OF GOVERNMENT CORNER

EAST QUARTER \_\_\_\_\_ Corner of Section 36 , Township 108N , Range 39W

5th Principal Meridian, State of Minnesota, County of MURRAY

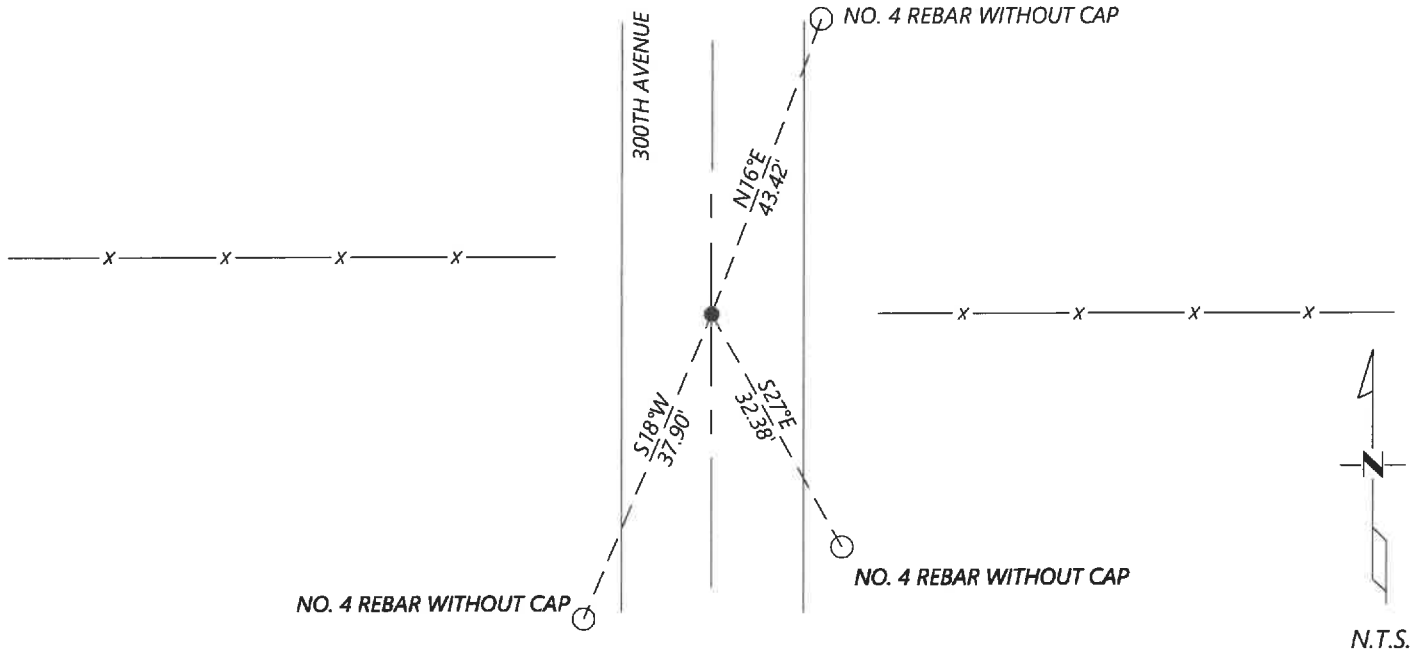
At the corner location shown on the sketch:

On 8/27/2020 found a NO. 5 REBAR WITH YELLOW PLASTIC CAP "ESPLAN LS 43803" DOWN 0.2FT  
DATE

left monument as found       lowered monument       removed monument (explain)

On \_\_\_\_\_ placed a \_\_\_\_\_  
DATE

### SKETCH OF REFERENCE TIES



Statement of evidence for this corner location is on back of this page.

I hereby certify that this document was researched and prepared by me or under my direct supervision and that I am a licensed Land Surveyor under the laws of the State of Minnesota.

Signature [Handwritten Signature]

Date 6/17/2021 License No. 45874

Title:

- Land Surveyor       Professional Engineer
- County Surveyor       County Engineer

OFFICE OF THE COUNTY RECORDER

County of Murray

I hereby certify that this document was filed in the Co.

Recorder's office at \_\_\_\_\_ M. on the \_\_\_\_\_ day of \_\_\_\_\_ A.D. 20 \_\_\_\_\_

County Recorder [Handwritten Signature]

by JUN 22 2021, Deputy

DOCUMENT NO. \_\_\_\_\_

**Statement of Evidence:**

East Quarter Corner of Section 36, Township 108 North, Range 39 West, 5th Principal Meridian, Murray County, Minnesota.

*No GLO Notes.*

- 1900 Cottonwood County resurvey shows a distance of 2653ft to the Northwest and Southwest corners of Section 31.
- N/A Survey record for Section 36 shows the original government corner was found. A distance of 2651.1ft is shown to the Northeast and Southeast section corners.
- 2008 November, A survey in Section 36 by Perry Zieske shows that an iron was found at the corner.
- 2014 June, A survey in Section 31 by Dennis Esplan shows that he set a  $\frac{5}{8}$ " rebar with cap #43803.
- 2016 August, Murray County Highway Department data shows that an iron pin with Esplan cap was found at the corner.  
Coordinates: N: 197864.83 E: 579921.45
- 2020 September, Westwood Professional Services searched and found an iron with cap "Esplan LS 43803". The position fits well with the 2008 Esplan survey and also fits reasonably well with the distances reported by 1900 Cottonwood County resurvey. I accepted the found monument and set reference ties.

Analysis of the recovered data, field evidence and survey measurements, indicates that the monument found is the correct perpetuation of this corner. For additional information concerning this corner please contact Westwood Professional Services.